

# Motorways Summer Season

PLAN AHEAD AS  
NZTA MOTORWAY  
CONSTRUCTION  
SEASON HITS  
HIGH GEAR



**1 Auckland Harbour Bridge**  
26 DECEMBER -  
8 JANUARY  
Two northbound lanes will be closed for resurfacing.

**2 Victoria Park Tunnel**  
11 - 14 NOVEMBER  
Intensive work to connect tunnel lanes to SH1 will cause severe disruption and delays for northbound motorway drivers through the Central Motorway Junction (Spaghetti Junction) throughout the weekend. Two of tunnel's three lanes are scheduled to open on Monday 14 November.

**4 Pokeno SH1/2 Interchange**  
22 - 24 NOVEMBER  
Overnight closures SH1 southbound for highway resurfacing.

**3 Newmarket Viaduct**  
3 - 4 DECEMBER  
Three of four southbound lanes closed on the Southern Motorway between Gillies Ave off-ramp and St Marks Rd on-ramp for work to connect or "stitch" together the southbound and northbound viaducts.

**5 Lincoln Road Northwestern Motorway**  
7 - 8 JANUARY  
Motorway closure and diversions in place while the old Selwood Road overbridge is demolished.

**4 Pokeno SH1/2 Interchange**  
27 - 29 NOVEMBER  
Overnight closure SH1 northbound for highway resurfacing.

**5 Lincoln Road Northwestern Motorway**  
28 - 30 JANUARY  
Full closure of Southern Motorway northbound between Market Road and Gillies Avenue so that traffic can be switched on to new northbound viaduct.

**4 Pokeno SH1/2 Interchange**  
4 - 6 DECEMBER  
North and southbound links from SH2 to SH1 closed overnight for resurfacing.

**5 Lincoln Road Northwestern Motorway**  
7 - 8 JANUARY  
Motorway closure and diversions in place while the old Selwood Road overbridge is demolished.

## PTA @ a Glance

1. PTA meeting is on **TUESDAY 6 December, 7 pm** (not Wednesday as previously advertised)
2. **12 Days of Christmas - Scratchies** on sale from **Wednesday 30 November \$2 each**. More information will be sent home next week!
3. **Kawau Classic Fishing Competition** - 4<sup>th</sup> & 5<sup>th</sup> February 2012. All proceeds from the Fish Auction on Sunday 5<sup>th</sup> February going to the Snells Beach School. Tickets available from December.

## CHRISTMAS GIFT FAIR

Friday 2nd December 2011  
3.00-9.00 pm  
Mahurangi College Hall  
Warkworth

35 stalls featuring local handmade and designer products,

**Yummy local cuisine and wine**  
**Festive entertainment including**  
**The Mike Nisbet Trio, A Raffle**

**Book Signing:-** Mosaics: Innovative, Creative Ideas & Designs using the Latest Techniques by Elizabeth Atkins-Hood, Elizabeth Joy Bell

**Entry by gold coin donation.**



## Warkworth & Mangawhai Holiday Programme

Give your child a head start for the New Year in Maths, Reading, Spelling or Written Language.

**Open Monday 23rd January to  
Thursday 26th January 2012**

Ring Margaret for available times on **0800**

**888 674 or 021 632 312.**

**Book early for limited spaces**

"Snells Beach School will prepare children for successful futures and life-long learning through dynamic teaching and quality learning opportunities"

## From The Board of Trustees



*Tena kotou katoa; greetings to all our school families and friends*

Dear Parents and Caregivers

We became aware of some inappropriate behaviour amongst a small group of children at the school in Week 3 of Term 4.

The Principal has spoken directly with the children involved and their parents. We have taken immediate action to investigate the matter properly, and the appropriate support has been put in place for the students concerned and their families. Please respect the confidentiality of the situation and the privacy of the children and families involved.

The Board of Trustees is confident that the school management and staff responded appropriately to the issue. Coincidentally, the KOS (Keeping Ourselves Safe) programme was already planned to run which we feel will be beneficial to our community.

As always, the safety of all children in the school is our first priority.

If you are concerned about your child please contact the Principal, Jill Corkin directly.

## School Donations 2012

The Board has reviewed the suggested school donation for 2012. It has remained the same for 3 years and for the fourth year in a row in 2012 the school will be making an operating loss. This is because we simply do not receive enough funding from the Ministry to maintain the school to the standard we currently enjoy. We constantly look for ways to obtain funding from other sources and to fundraise to make up this shortfall.

For 2012 the Board has set the suggested donation level at \$130 for the first child and \$70 for all other children in the family, for the full year. However, as a goodwill gesture the Board is willing to reduce this by \$10 per child until 31 March, 2012. This allows all families to receive the benefit of early payment. Remember you receive a tax rebate if donations are paid by 31 March.

Flexible payment options are available - please just ask at the office. Regrettably we cannot offer this discount to part payments.

Regards  
Don Scandrett  
BOT Chairperson

No new students since the last  
newsletter  
Total School Roll 214

## School Diary

Week 6: 28 Nov - 2 December

**Elective gardening this Saturday**  
9am - 12 noon - come and give 30 minutes of your time ☺

**Monday 28 November**

9.30 - 10.00 am Friendship seat opening - Invitation only.

10.00 am School Helpers morning tea - Invitation only.

**Thursday 1 December**

Yr5 Camp - Mangawhai - All day.

1.00 - 2.30pm Yr 3/4 swimming - Mahu College.

**Friday 2 December**

Yr5 Camp - Mangawhai - All day.

**NO ASSEMBLY TODAY**

Week 7: 5 - 9 December

**Tuesday 6 December**

Wardens & Patrols Waiwera trip

Scandrett Park Full School Picnic -

**NOTE CHANGE OF DATE FOR PICNIC**

7.00 pm - P.T.A meeting. All welcome.

**Wednesday 7 December**

5.00pm - BOT Meeting.

**Friday 9 December**

**NO ASSEMBLY TODAY**

6.00 pm - Carols in the Park - Lucy Moore Park Warkworth

Please Note: The Full School Picnic Date has changed to:

**Tuesday 6 December**



# Snells Beach School

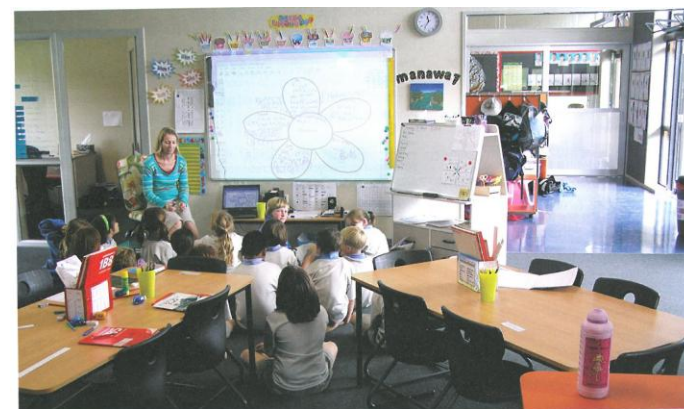
LOCATION | SNELLS BEACH, NEW ZEALAND

*The design has served us well, with the teaching spaces providing very effective and comfortable learning environments. Our imagery and core values have been reflected in the design, so it has been easy to reinforce these concepts with the students and the parent community, resulting in a great sense of ownership and pride.*

Jill Corkin, principal, Snells Beach School



ARCHITECTS: Brewer Davidson Architects (Peter Davidson)  
 CLIENT: Northern Regional Office, Ministry of Education  
 TYPE OF SCHOOL: Primary  
 NO. OF STUDENTS: 173  
 TYPE OF PROJECT: New school  
 GROSS SURFACE AREA: 1 824m<sup>2</sup>  
 YEAR OF COMPLETION: 2009  
 CONTEXT: Small town



**A range of pedagogies**  
 Each single-storey teaching block incorporates two classrooms and professional work spaces that teachers use for planning and administrative purposes. They have been designed to facilitate a range of pedagogies: whole class instruction, small group instruction, one-to-one teaching or support work, independent study and combined classes for team teaching. They also incorporate very large "wet spaces" for art and other messy activities. There is wireless access from all areas, both inside and outside the buildings.

The classrooms are designed for excellent airflow and passive heating. Windows are at student height in all rooms, so that when children are seated they can see outside. Large overhangs provide shade to the classrooms in summer, but allow for sun in winter. They also provide shelter from the wind and rain so that shoes and bags can be left outside. Smart technology is used to turn lights off in rooms where no movement is detected. Rainwater is collected and filtered for use in flush toilets and for outdoor irrigation.

The classrooms can be arranged to accommodate different teaching styles.

There are no built-in cabinetry or fixed furniture in any of the classrooms. Each room is a blank open space that can be set up in a way that suits the children and their teacher. This allows teachers and students to group tables for co-operative learning in all classrooms as there are no restrictions on positioning. The shared spaces in each block allow both classes to interact by sliding back the doors to the classrooms.

The children are encouraged to walk, cycle or bus to school. The school organises "walking school buses", where students walk to school, chaperoned by one or more adults, following designated routes. It has also had to put in a second bike rack to cope with the numbers cycling. It has established an area of native planting to encourage birds to live and breed on the school grounds, and a kitchen garden and orchard designed and planted by the children themselves.

**Sustainability**  
 The school places a strong emphasis on sustainability and environmental education, and this is reflected in its design. The school meets the five-star green rating criteria, signifying "New Zealand Excellence" according to the ratings developed by the New Zealand Green Building Council.

Snells Beach School has a strong community focus. It has developed partnerships with the local iwi (Maori) community, with Rotary and Lions clubs, Auckland Regional Council, and with the local tennis club, whose facilities are used by the school. People in the community are invited into the school to assist with literacy and gardening programmes.

Located in a semi-rural beachside community, the design of Snells Beach School reflects the idea of a village or community of buildings. The unobtrusive style of the school buildings complements the residential and holiday homes in the area.

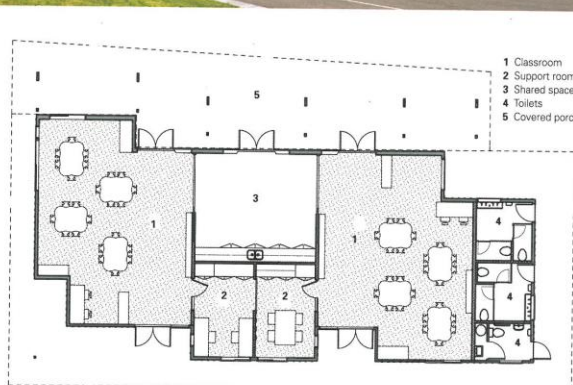
The school hall and library are positioned around an outdoor central courtyard, which has become the heart of the school and is a favourite area for children to meet and play. The library is large enough to accommodate two classes and allows for small groups to work independently.

**Room for growth**

The school comprises five single-storey classroom blocks, with a separate hall, library and administration block. The current set-up allows a total enrolment of 260 students, but there is room on the site for additional teaching blocks that will take the capacity to 520.

The building materials are natural and soft-looking. Recycled concrete and other environmentally sensitive materials have been used in the construction. The colour scheme has been selected to reflect and blend with the local flora and fauna and the beach.

- A: The unobtrusive low-rise school buildings blend in with the local environment.
- B: Learning boards around the campus explain how the facilities were built on sustainable principles.
- C: Large roof overhangs provide shade and shelter.
- D: Floor plan of one of the classroom blocks.



**Snells Beach School**  
 is one of  
**60 Schools in the World**  
 Selected for  
 the Compendium of  
**Exemplary Educational**  
**Facilities**  
 Publication 2011

## School Events



**NIKAU 1 & 2 -Yr5's**  
**EXTEND A MASSIVE**  
**THANK YOU**  
**TO EVERYONE THAT**  
**CONTRIBUTED IN ANY WAY**  
**TO THEIR CAMP**  
**FUNDRAISING EFFORTS**



## WE ARE LOOKING FOR THESE MISSING LIBRARY BOOKS

**Picture Books**

- The Runaway Train
- Suddenly!
- Shock Monday
- Mrs Parata Rides Again
- Hairy Maclary's bone
- Kiwi has a big secret
- Sharing a Shell
- Oh the Places You'll go

**Sophisticated Picture Books**

- Discovery of Dragons: new research revealed
- Window

**Quick Reads**

- Phantom of the Subway
- Return of the Killer Coat
- Victoria the violin fairy
- Sami's genies

**Non Fiction**

- Horse Crafts
- See how it's made: clothes, toys etc.
- Materials
- Big Book of things to do
- Weather
- Life Processes
- Pacific Islands
- Crimpy's cooking for Kids
- Traditional Maori Legends-Nga tai korero
- Skateboarding
- Which Native Tree?
- Rivers and Water
- On the Move

**Fiction**

- Uncovered
- Timesnatch
- Payback
- Holes
- The World around the Corner
- Trouble Patch

**Reference**

- Cells
- Football and other Games
- Quentin Blake
- Collins Junior World Atlas
- Concise Atlas of the World x3

**Teacher Resources**

- Charts and Graphs
- Plants

**PLEASE LOOK HARD!**  
**FOR THESE**  
**AND RETURN TO MANAWA 2**

## ELECTIVE GARDENING – SATURDAY 26 NOVEMBER 2011

Come and vote in the General Election on Saturday 26 November and give us a couple of hours of your time to help in the garden.

We desperately need a hand to keep on top of the weeds that are appearing with this warm, wet weather.

Help us blitz them, cast your vote and have a social catch up all at the same time!

We would appreciate any time you can give between 9am and 3pm on Saturday 26 November – 1 hour, 2 hours, or more – all help gratefully received.

Please report to Mrs Corkin, Mrs Neels. Mrs Mackay or Mrs Bradshaw on the day and they will point you in the right direction.

**THANK YOU !**

## STARS OUTSIDE OF SCHOOL

**Congratulations to Bianca Lungu – for her achievement in passing her ballet exams with honours (88 out of 100). This placed Bianca 4<sup>th</sup> overall in her dance school "Dance Dimensions". Well done!**

*If you have achieved something in your sport or hobby outside of school, please let Mrs Corkin know so that we can recognise you in the newsletter!*