

PAID POSITION AVAILABLE
BOARD MINUTE
SECRETARY

The Board of Trustees of Snells Beach School is looking for a skilled person to take the minutes at the monthly Board meetings. Successful candidates must:

- Be able to maintain strict confidentiality
- Have excellent note taking and keyboard skills
- Have an excellent command of English
- Have access to a computer and be able to produce the minutes in electronic form in a timely manner
- Be able to communicate electronically via email

Board meetings are held on the Forth Monday of each month @ 6pm at the school. Remuneration will be on an hourly basis for meeting attendance and time to write up the minutes (approximately 4-5 hours per month). The rate is negotiable, depending on skill level.

If you are interested, please forward a brief CV outlining your experience and skills addressed to:

Bridget Farmiloe
 Board of Trustees Chairperson
 C/o Snells Beach School
 P O Box 26, Snells Beach 0942

Your CV may be posted, handed in person to the Office Manager at the school or emailed to:

admin@snellsbeach.school.nz

by 4pm Friday 7 May 2010.

PTA – AGM

Wednesday
28 April - 7pm
Followed by the normal
PTA meeting
to be held in the
Staffroom
All welcome

CALLING ALL DADS!

We need your help

On 1st May from 1pm

with a WORKING BEE

for the Hopscotch and Four Square areas.

This will involve lifting the existing pavers and relaying with new coloured pavers. tiles.

John Bettridge from JB's No.1 Landscaping is project managing the job and will be on hand to give instructions - you may learn a few skills along the way!

For safety reasons, we would prefer no or as few children as possible to join us, but we do realize that childcare cover might be difficult at the weekend so we will be running videos in the hall for any who need to bring along their children with them.

We are looking for at least 20 volunteers. Please wear closed in footwear (ie sandshoes or boots), bring work/garden gloves if possible and a drink. A Sausage Sizzle will be provided for the workers.

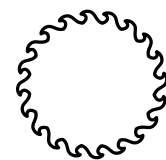
RAIN DAY SET FOR 8TH MAY

A form will be sent home with your children on Monday – please look out for it and volunteer so that we can brighten our children's playing area and they can play and learn together

Many thanks
 Snells Beach PTA

½ PRICE PIZZA THURSDAY

5-9PM throughout winter
 Bookings recommended - offer does not apply to takeaway's



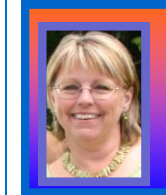
LEIGH SAWMILL CAFE
 142 PARKIRI ROAD, LEIGH
 PHONE 422 6019



Newsletter

23 April 2010

"Snells Beach School will prepare children for successful futures and life-long learning through dynamic teaching and quality learning opportunities"



From the Principal

Kia ora, and greetings to our school families

Welcome back to our second term of the year, especially to the new children and families who joined us this week, taking our roll to 177. We hope you are enjoying being part of our school.

Term 2 is a longer term – 11 weeks - and it is an important learning term for us. The learning context this term is around **Water** – the beach, the sea, the river with questions such as:

- where does water come from?

- why is it water important?
- what are the differences between different types of water?

Science is the curriculum host area for this learning focus, so you can expect lots of experimentation with water! Our Living Value for the term is **Cooperation**. Children will learn what this means and how to live it every day – so you may find this useful to reinforce at home.

As we look ahead over the term there are a number of things to focus on that will be of interest. **Netball, Soccer, & Ripper Rugby** are two main sports this term. Our netball girls start their first games this weekend – good luck girls! **Arbor Day** will provide a focus again for our Foundation Garden, and we are very fortunate to have been offered support for this through a donation from the Phillips family in memory of their daughter Louise. More on this later in the term. We have a very special **Book Week** coming up from 17-21 May with lots of activities related to reading and books and we will also be celebrating **Matariki** in June. I am sure, as always the term will fly by!

This term is also an important one for discussing your child's progress with you. I hope you will all take the opportunity to meet with the teacher next week. This will be followed by a written mid-year progress update.

With **Anzac Day** this Sunday, I hope you will all find some time to relax with family and reflect on this important day of remembrance for our country.

Regards
Jill Corkin, Principal

School Diary

Term 2 Dates 2010: Monday 19 April 2010 – Friday 2 July 2010

Week 8

Monday 26 April	Tuesday 27 April	Wednesday 28 April	Thursday 29 April	Friday 30 April
6pm BOT meeting		Parent Teacher interviews – school closes 2pm 7pm PTA - AGM	Parent Teacher interviews – school closes 2pm	2pm – Junior Assembly

Week 9

Monday 3 May	Tuesday 4 May	Wednesday 5 May	Thursday 6 May	Friday 7 May
				2pm – Senior Assembly BOT Voting closes

Other Dates to Note – Tues 11 May Interschool Field Day



BOOK WEEK

17-21 MAY

BOOKS WILL BE AVAILABLE FOR PURCHASE IN THE HALL, BEFORE AND AFTER SCHOOL.

JUNGLE BUNGLE LIVE PERFORMANCE

\$4.00 PER CHILD

18 MAY



PERMISSION FORMS & INFORMATION TO BE DISTRIBUTED

BOOK CHARACTER FANCY DRESS PARADE FRIDAY 21 MAY @ 9.30AM

**MAYOR PENNY'S READING CHALLENGE
1/2 AN HOUR A DAY FOR THE MONTH OF MAY**

And be in to win a bike or other prizes forms to go out next week



Education Information Column

Support for Special Education Needs

The education system in New Zealand is somewhat unique in the world in that it takes a fully mainstream approach to education for children with special needs. We do still have a few specialist facilities for schooling, but for the most part, children with all types of needs access mainstream education. This inclusive approach means that we have a range of outside providers who support the children and the school. They come in to the school from time to time and provide specialist guidance, but they very rarely work one-on-one with the child. Unfortunately the level of real support provided to us has been steadily reduced by successive cuts to funding and this has become one of the greatest pressure points for schools.

You might be interested to know of some of the services that work with us:

Resource Teachers of Learning & Behaviour (RTLB) – our local cluster has 2 RTLBs who work with the 6 primary schools and the College. One is based at the College for the students there, and the other works across all 6 primary schools. This specialist teacher provides assessments of moderate needs children and supports the teacher to adapt classroom programmes for the child.

Group Special Education (GSE) – this is an arm of the Ministry of Education and employs Educational Psychologists, Speech Language Therapists, Occupational Therapists who provide advice and guidance to schools.

Supplementary Learning Support Teachers (SLST) – If a child receives funding for SLS, they will be assigned an SLST who will come into the school for a few hours a week and work with the child.

Public Health Nurses and Social Workers from the District Health Board also work with us from time to time.

School Events

Netball

This Saturday 24th April is our first playing Saturday for our Netball Teams.

They will need to bring: -

- water bottle
- Snells Beach School Netball shirt /skirt (Denise will have the skirts for SB2).
- Food (snacks – preferably healthy ones), there is a shop there.
- School fleece/jersey and warm track pants or leggings.
- Netball shoes/trainers and WHITE ankle socks.
- Red or Black underwear is preferred but not essential.



Please **NO jewels, especially earrings.** They will have more than one game so please be prepared to stay for the whole morning. **TRAINING FOR NEXT WEEK THE 28TH WILL BE AT 2PM!**

Upcoming Sports Events

Interschool Netball	Tuesday 11 th May
Interschool Soccer	Tuesday 1 st June
Ripper Rugby	Ongoing Terms 2 and 3

Any parents wanting to help coach and take a team please contact Mr Morley via the school office.

SKIDS AFTER SCHOOL CARE PARENT INTERVIEW DAYS

Wednesday 28th & Thursday 29th April

Children who currently attend the SKIDS after-school programme will be accommodated from 2pm on both of these days.

SKIDS are also willing to accommodate 'Casuals' on these days on a "first come, first served" basis.

Queries call Doreen 0273578260.

BOT ELECTION KEY DATES

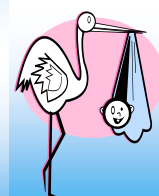
Having determined that the election will be held on 7 May 2010, the following key dates are now set:

- Call for nominations by 15 April
- Nominations close noon 23 April
- Voting papers distributed by 28 April
- Voting 7 May
- Count and declarations 13 May
- Board takes office 14 May

CONGRATULATIONS

Miss Robbins

on the birth of her boy
Jackson Scott Douglas
Monday 12 April 2010
7lbs



WELCOME TO:

Ethan Bayer	Kau 1	Marley Joyce	Kau 2
Jessie Chapman	Kau 1	Dante Adams	Man 1
Saphire Clark	Kau 1	Kurtis Gwyn	Man 1
Samantha Le Bas	Kau 1	Zion Joyce	Man 2
Pearl Kleyn	Kau 1	Ashlee Gwyn	Nik 2
Riley Gwyn	Kau 1		
Quinn Morley	Kau 1	TOTAL ROLL	177

We hope you will enjoy being a part of our school.

THIS & PREVIOUS NEWSLETTERS
AS WELL AS OTHER SCHOOL INFORMATION
CAN BE FOUND ON OUR WEBSITE:

www.snellsbeach.school.nz

ABSENCE TEXTING...

WE HAVE TEXTSTREAM ABSENCE NOTIFICATION
When the rolls have been checked if we have not heard from you, you will receive a text requesting a Yes & reason or No reply. When you respond to this text it will notify me by my email.